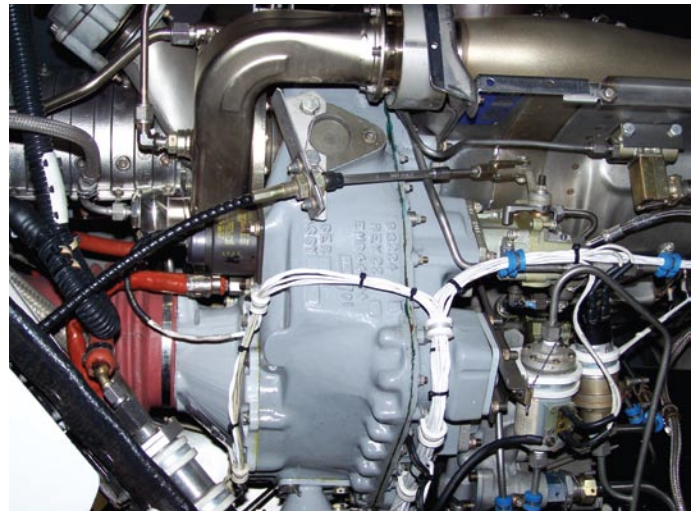
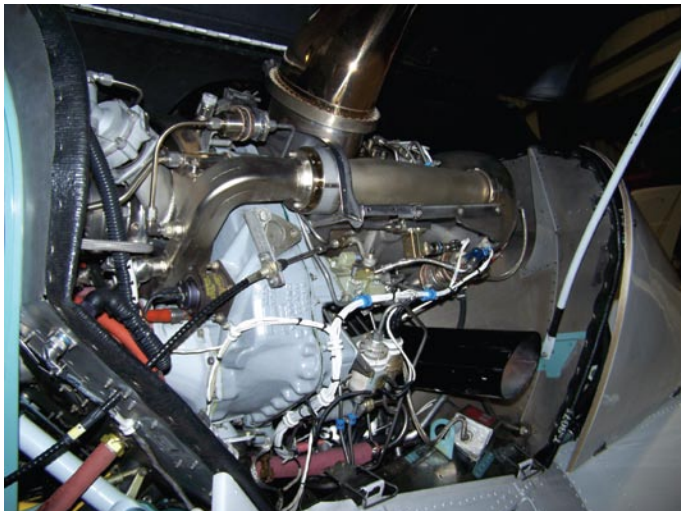
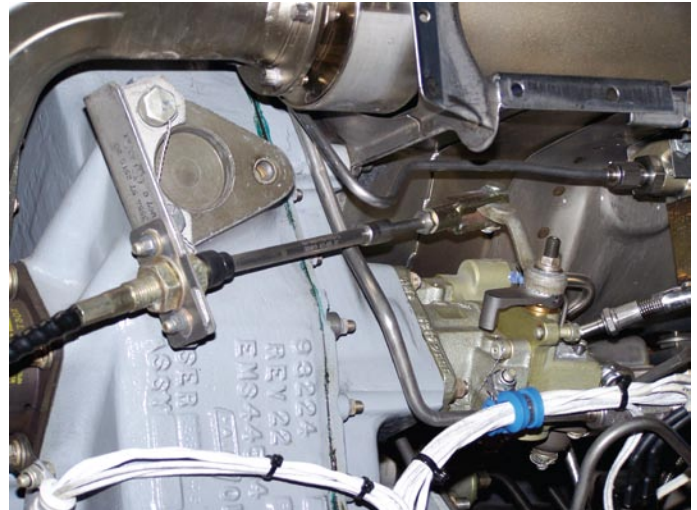


**Maintenance Made Easy**

**AS 355 Push-Pull Governor Control Cables**

This GenerationFX design change replaces the existing OEM LH and RH engine governor Bowden-type control cables and spring arrangement with high quality aerospace push-pull control cables. The new cable installation uses the existing cable supports and maintains the same functionality as the original configuration without the constant engine rigging and cable maintenance. The new sealed cables prevent debris and moisture contamination, which during normal operations with the OEM installation can lead to increased resistance within the cable that cannot be overcome quickly by the spring. In cold weather operations accumulated moisture can freeze and cause dramatic effects in flight. The new cables also ensure immediate engine response even as your governors age and the governor arm resistance increases requiring additional force to actuate, resulting in slow sluggish engine response.

- **Environmentally sealed push pull cables**
- **Dramatic reduction in engine rigging maintenance**
- **Quick install with instant results**
- **Immediate engine response from collective input**
- **Eliminates OEM Bowden cables and springs**



**AS 355 PUSH-PULL GOVERNOR CONTROL CABLES**

Approval	STC Number	A/C Approval	STC Description	
Canada	SH 05-8	AS 355 E/F/F1/F2 (RR C20F and C20R)	AS 355 Push-Pull Governor Control Cables	
FAA	SR02174NY	AS 355 E/F/F1/F2 (RR C20F and C20R)	AS 355 Push-Pull Governor Control Cables	
EASA	EASA.IM.R.S.01078	AS 355 E/F/F1/F2 (RR C20F and C20R)	AS 355 Push-Pull Governor Control Cables	
Part Number	Product Description		Kit Weight	Installation Time
355FX76-001-01	1 Kit - 1 Aircraft - 2 Control Cables		Negligible	4 hrs
Part Number	Product Description	Special Comments	Aircraft Model	Price(USD)
355FX76-001-01	1 Kit - 1 Aircraft	One kit includes control cables for two engines	AS 355 E/F/F1/F2	\$3,413